

**SONY**<sup>®</sup>

Spectapix  
Digital Color Printer  
**UP-D70A**



Simulated picture

# Join the Amazing World of Digital Photo Printing

To turn your images into photo-realistic prints that will satisfy you professionally, first start with a Sony UP-D70A Digital Color Printer. Then select your print media from the Sony range of laminated, color, and black and white print packs.

This powerful combination provides the superior image quality demanded by those who work in portraiture professional photography, graphic design, multimedia production and other creative fields. And uses reliable, cost effective for prints that have a rich, photographic-like, appeal.

## Superb Quality Image Reproduction

Incorporating Sony dye sublimation printing technology, the UP-D70A Digital Color Printer outputs photo-realistic quality prints that have over 16 million color variations. It gives natural continuous-tone images by combining the innovative PQC (Picture Quality Controller) for crisp image reproduction with easy gray balance adjustments and reliable, cost effective lamination media.

## Photographic look & feel

The UP-D70A outputs prints of portrait quality, when using the optional 220 micron thick self-laminating paper. This laminating layer provides extra protection from environmental factors such as ultra-violet rays or finger marks.

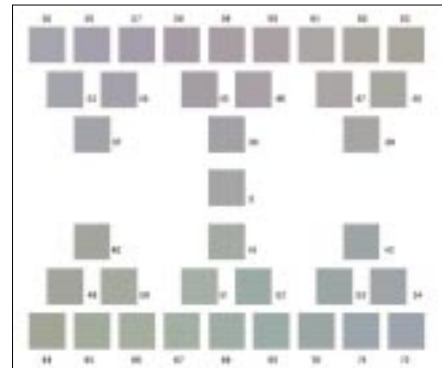


with lamination

Four types of finish are available with this unique Sony laminating process: Glossy, Texture, Non-glare and Matte.

## Gray Balance Adjustments

Using the printed gray balance chart, the grey color can be easily specified. The UP-D70A distinguishes delicate gray colors and reproduces the color what is needed.



Gray balance adjustments



## Color Management by ICC profiles

UP-D70A equips with ICC (International Color Consortium) profiles and supports CMM (Color Matching Method). This means that the printed color can be simulated on the preview monitor.

## Letter and Letter Plus Printing

The UP-D70A can output prints in both Letter 203.2 x 254 mm (8 x 10 inches) and Letter plus 216 x 297 mm (8 5/8 x 11 3/4).

## High Speed Printing

Letter images are printed out in approximately 85 seconds in the 300 dpi mode and approximately 55 seconds in 150 dpi mode. Even when printing and laminating on lamination paper in 300 dpi mode, the UP-D70A produces prints in approximately 115 seconds.

## Detachable Fan Filter for Dust Prevention

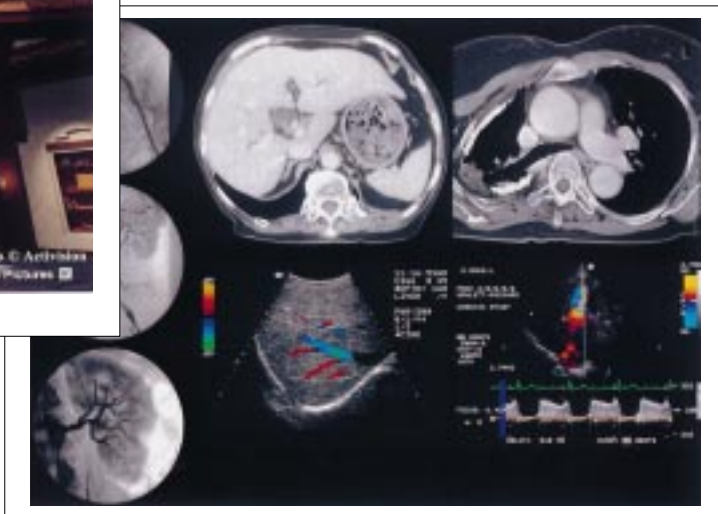
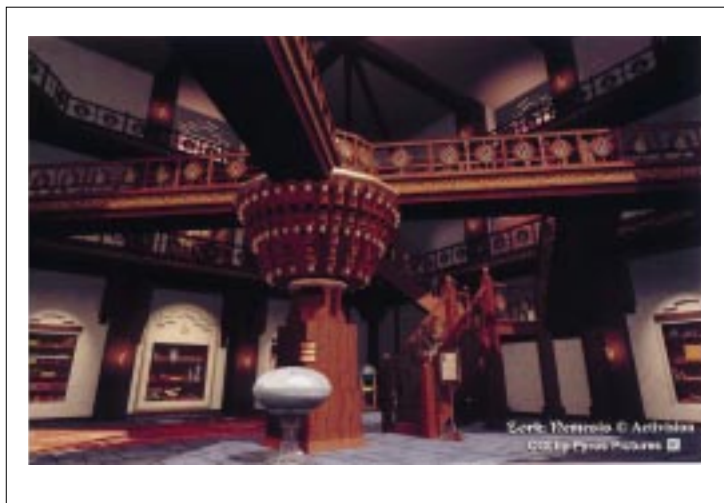
A detachable fan filter is provided to prevent dust causing color spots.



## Compliance with the Energy Star Program\*

To meet the growing needs for environmentally responsible, energy-efficient printers, the UP-D70A easily meets the Energy Star program. When the UP-D70A is in its stand-by mode, it consumes less than 30 W.

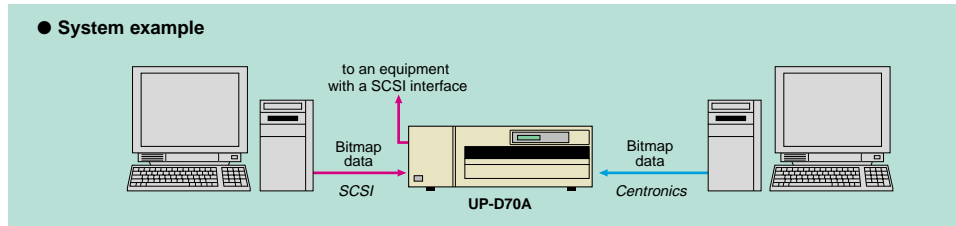
\* The Energy Star label does not indicate quality or service assurance.



# System Configuration & Connections

High speed bitmap data transfer via SCSI or Centronics interfaces is provided with the UP-D70A. This configuration is suitable for printing hard copy images as well as graphics made with software such as Adobe® Photoshop®.

In this configuration, image data, including three-color information (RGB), can be transferred from a host computer to the expanded picture memory for rapid printing. Efficiency is enhanced with this configuration as the computer is free to perform other tasks once the data has been transferred to the memory.

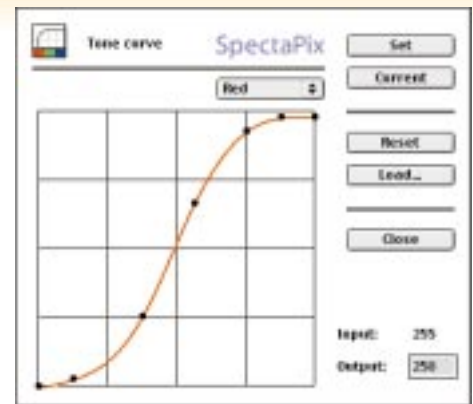
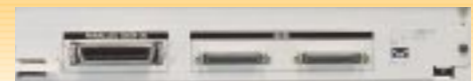


- The UP-D70A has a SCSI-2 high-speed interface and Centronics parallel interface.
- The UP-D70A is supplied with an easy-to-use printer driver.

Supplied software\* (provided by hybrid CD-ROM)

- Printer driver (SCSI, Centronics) for Windows for Work Groups 3.11, Windows 3.1, Windows 95/98
- Printer driver (SCSI) for Windows NT4.0
- Chooser driver for Mac OS
- Photoshop plug-in (SCSI, Centronics) for Windows for Work Groups 3.11, Windows 3.1, Windows 95/98
- Photoshop plug-in (SCSI) for Windows NT4.0
- Photoshop plug-in for Mac OS
- Test chart data for gray balance adjustment (TIFF and Photoshop format)
- ICC profiles

\*The Silicon Graphics Workstations driver software is available at the following URL:  
<http://www.sony.co.jp/DP-driver-E>



Tone curve adjustments with Photoshop plug-in for Macintosh OS.

## Print Media

**UPC-741 Letter-Size Self-Laminating Color Print Pack**  
**UPC-747 Letter Plus Size Self-Laminating Color Print Pack**



UPC-741



UPC-747

Contents: A roll of YMCL Ink Ribbon  
72 sheets of Print Paper

**UPC-8811 Letter-Size Color Print Pack**

Contents: A roll of YMC Ink Ribbon  
100 sheets of Print Paper

**UPC-8817 Letter Plus Size Color Print Pack**

Contents: A roll of YMC Ink Ribbon  
100 sheets of Print Paper

**UPC-8821 Letter-Size B&W Print Pack**

Contents: A roll of B&W Ink Ribbon  
100 sheets of Print Paper

**UPC-8841A Letter-Size Self-Laminating Color Print Pack**

Contents: A roll of YMCL Ink Ribbon  
70 sheets of Print Paper

# Specifications

## Printing Performance

<b>Printing Method:</b>	Dye transfer sublimation thermal printing		
<b>Resolution:</b>	300 dpi or 150 dpi selectable		
<b>Gradation:</b>	256 levels each for Yellow, Magenta and Cyan (16.7 million colors per dot)		
<b>Effective Print Pixels:</b>	Letter Size:	300 dpi; 2,400 x 3,000 dots 150 dpi; 1,200 x 1,500 dots	
	Letter Plus Size:	300 dpi; 2,550 x 3,508 dots 150 dpi; 1,275 x 1,754 dots	
<b>Print Area:</b>	Letter Size:	203.2 x 254 mm (8 x 10 inches)	
	Letter Plus Size:	216 x 297 mm (8 5/8 x 11 3/4 inches)	
<b>Paper Size:</b>	Letter Size:	216 x 279 mm (8 5/8 x 11 inches)	
	Letter Plus Size:	222 x 322.4 mm (8 3/4 x 12 3/4 inches)	
<b>Printing Time:</b> (Color)	Letter Size:	<b>Standard</b>	<b>Laminating</b>
		300 dpi; 85 sec.	115 sec.
	Letter Plus Size:	150 dpi; 55 sec.	85 sec.
		300 dpi; 90 sec.	130 sec.
150 dpi; 60 sec.	95 sec.		
	<b>Printing Time:</b> (B/W)	Letter Size:	<b>Standard</b>
300 dpi; 55 sec.			
150 dpi; 35 sec.			
<b>Interface:</b>	SCSI, Centronics		
<b>Picture Memory:</b>	30 MB		

## General

<b>Paper Tray Capacity:</b>	100 sheets
<b>Power Requirements:</b>	AC 120V, 50/60 Hz
<b>Power Consumption:</b>	Max. 270 W, Less than 30 W (stand-by mode)
<b>Dimensions:</b>	493.8 (W) x 189 (H) x 468.8 (D) mm (19 1/2 x 7 1/2 x 18 1/2 inches)
<b>Mass:</b>	19 kg (41 lb 14 oz)
<b>Safety Standards:</b>	UL 1950, CSA C22.2 No.950
<b>Supplied software* (provided by hybrid CD-ROM)</b>	Printer driver (SCSI, Centronics) for Windows for Work Groups 3.11, Windows 3.1, Windows 95/98 Printer driver (SCSI) for Windows NT4.0 Chooser driver for Mac OS Photoshop plug-in (SCSI, Centronics) for Windows for Work Groups 3.11, Windows 3.1, Windows 95/98 Photoshop plug-in (SCSI) for Windows NT4.0 Photoshop plug-in for Mac OS Test chart data for gray balance adjustment (TIFF and Photoshop format) ICC profiles
<b>Supplied Accessories:</b>	Ink Ribbon Holder Paper Tray Paper Cover AC Power Cable Operation Manual Fan Filter Thermal Head Cleaning Kit
<b>Optional Print Packs:</b>	Letter Size Self-Laminating Color Print Pack UPC-741 Letter Plus Size Self-Laminating Color Print Pack UPC-747 Letter Size Color Print Pack UPC-8811 Letter Plus Size Color Print Pack UPC-8817 Letter Size B&W Print Pack UPC-8821 Letter Size Self-Laminating Color Print Pack UPC-8841A

\* Printer driver for Silicon graphics WS is provided as freeware from SonyDrive. The newest driver software is provided at the following address:  
<http://www.sony.co.jp/DP-driver-E>

### Front Panel



### Rear Panel



# SONY

Adobe and Photoshop are registered trademarks of Adobe Systems Incorporated.  
Macintosh is a registered trademark of Apple Computer Inc..  
Windows and Windows NT are registered trademarks of Microsoft Corporation.

© 1999 Sony Corporation. All rights reserved.  
Reproduction in whole or in part without written permission is prohibited.  
Features and specifications are subject to change without notice.  
All non-metric weights and measures are approximate.  
Sony is a registered trademark of Sony Corporation.  
All other trademarks are the property of their respective owners.

---

**Distributed by**